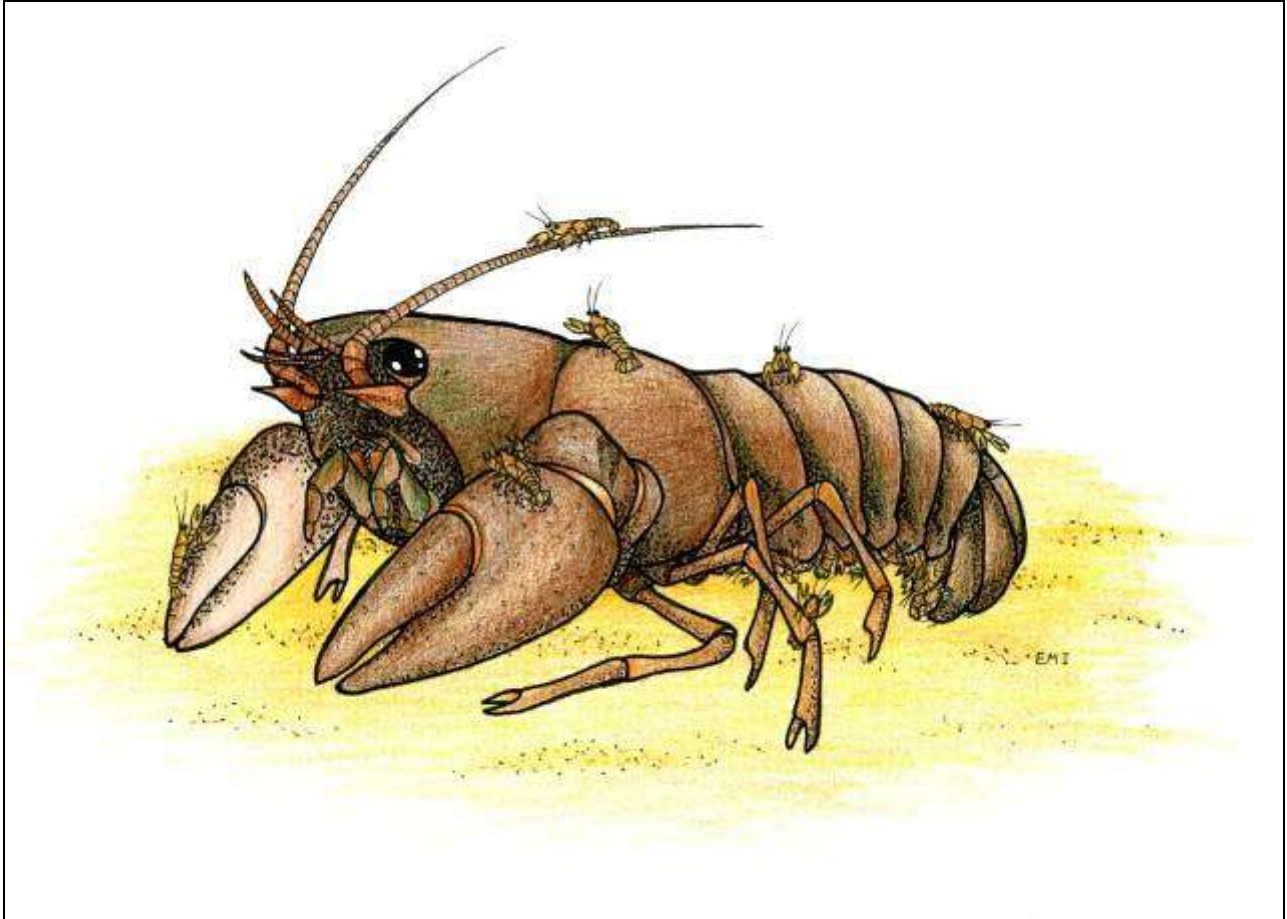


# Crayfish Conservation in the British Isles

Proceedings of a conference held on 25<sup>th</sup> March 2009 at the British Waterways Offices, Leeds, UK



Edited by

**Jonathan Brickland (Peak Ecology Ltd)**

**David M Holdich (Crayfish Survey & Research)**

**Emily M Imhoff (University of Leeds)**

**December 2009**

Supported by:

**peakecology** LIMITED  
ECOLOGICAL CONSULTANTS



**crayfishsurvey**  
AND RESEARCH

INTERNATIONAL ASSOCIATION  
OF  
**ASTACOLOGY**

